



**SPRINT**

EQUIPAMENTOS MOTO  
*Motorcycle Equipment*

2017



SPRINT

(P)

- uun/ist  
kuis/kan

700

P R  
⊕

SPRINT

meis  
cent

meis  
largo

0,5 cm  
+  
0,8 cm



03

CAPACETES

*Helmets*

13

BLUSÕES INVERNO - HOMEM

*Winter Jackets - Man*

23

BLUSÕES VERÃO - HOMEM

*Summer Jackets - Man*

25

LUVAS INVERNO - HOMEM

*Winter Gloves - Man*

27

LUVAS VERÃO - HOMEM

*Summer Gloves - Man*

29

BLUSÕES INVERNO - SENHORA

*Winter Jackets - Lady*

33

LUVAS INVERNO - SENHORA

*Winter Gloves - Lady*

35

LUVAS VERÃO - SENHORA

*Summer Gloves - Lady*

37

CALÇAS

*Pants*

39

CHUVA

*Rain*

41

FRIO

*Cold*

# City

ABS aprovado pela ECE

Design moderno

Forro interior em "Nubuck"

Forro Respirável e ventilado

Almofadas laterais destacáveis

Fecho Micrométrico

Viseira anti-riscos

Peso (Kg) – 1000 +/- 50Gr

Tamanhos – XS-XL

Cores – Branco, Preto Matt, Titânio

Matt, Bicolor Preto, Bicolor Branco

*ABS ECE Approved*

*Modern design*

*"Nubuck" inner lining*

*Breathable and ventilated*

*Removable cheekpads*

*Micrometric buckle*

*Anti-scratch visor treatment*

*Weight (Kg) – 1000 +/- 50Gr*

*Sizes – XS-XL*

*Colors – White, Black Matt,*

*Titanium Matt, Black Bicolor, White*

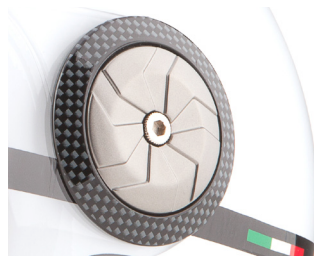
*Bicolor*



**Ref. SPH104**

Branco

White









**Ref. SPH103**  
Preto Mate  
Black Matt



**Ref. SPH107**  
Titânio Mate  
Titanium Matt





**Ref. SPH200**  
Bicolor Preto  
*Black Bicolor*



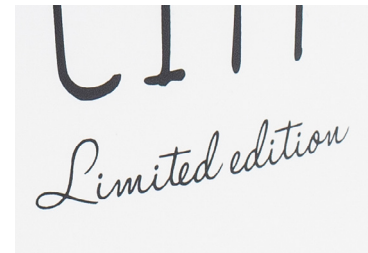
**Ref. SPH204**  
Bicolor Branco  
*White Bicolor*



EDIÇÃO  
LIMITADA



Ref. SPH202  
Lisbon City  
Edição Limitada  
Limited Edition





# Run

ABS aprovado pela ECE  
Almofadas laterais destacáveis  
Forro amovível  
Fecho Micrométrico  
Forro Respirável e ventilado  
Viseira anti-riscos  
Peso (Kg) – 1300 +/- 50Gr  
Tamanhos – XS-XL  
Cores – Branco, Preto Mate,  
Vermelho/Branco e Cinza/Branco

*ABS ECE Approved*  
*Removable cheekpads*  
*Removable inner lining*  
*Breathable and ventilated*  
*Micrometric buckle*  
*Scratch resistant visor*  
*Weight (Kg) – 1300 +/- 50Gr*  
*Sizes – XS-XL*  
*Colors – White, Black Matt, Red/  
White and Grey/White*



**Ref. SPH504**  
Branco  
White

**Ref. SPH503**  
Preto Mate  
Black Matt





SPRINT

SPRINT



Ref. SPH541  
Run Stroke  
Vermelho/Branco  
Red/white







Ref. SPH548  
Run Stroke  
Cinza/Branco  
Grey/white









**Ref. SPJ178**  
Preto/Cinza  
Black/Grey



**Ref. SPJ170**  
Preto  
Black



# Storm Evo

*100% Impermeável e respirável*  
*Proteções CE ombros, cotovelos e dorsal semirrígidas*  
*Material refletor*  
*Forro interior térmico destacável*  
*Ajuste na cintura*  
*2 Bolsos exteriores*  
*2 Bolsos interiores + 2 no forro*  
*Ajuste nos braços*  
*Sistema de ventilação frontal e traseiro*  
*Materiais – Poliéster, Nylon e Reflective tech*  
*Tamanhos – S-4XL*  
*Cores – Preto, Preto/Cinza*

*100% Waterproof and breathable*  
*Removable semi-rigid CE*  
*protections for shoulders, elbows and back*  
*Reflective Material*  
*Breathable lining removable*  
*Waist adjustment*  
*2 Exterior pockets*  
*2 Interior pockets + 2 in the lining*  
*Arms adjustments*  
*Front and back ventilation system*  
*Materials - Polyester, Nylon and Reflective tech*  
*Sizes – S-4XL*  
*Colors – Black, Black/Grey*

# Energy

100% Impermeável e respirável  
Proteções CE ombros, cotovelos e dorsal semirrígidas  
Material refletor  
Material anti-abrasivo nas mangas  
Forro interior térmico destacável  
Ajuste na cintura  
2 Bolsos exteriores + 2 no forro  
Ajuste nos braços  
Sistema de ventilação frontal e traseiro  
Materiais – Poliéster, Nylon, Spandex, membrana REISSA e Reflective tech  
Tamanhos – S-4XL  
Cores – Preto, Preto/Fluo e Preto/Ice

*100% Waterproof and breathable  
Removable semi-rigid CE  
protections for shoulders, elbows  
and back  
Reflective Material  
Anti-abrasive sleeves  
Breathable lining membrane  
Waist adjustment  
2 Exterior pockets  
2 Interior pockets + 2 in the lining  
Arms adjustments  
Front and back ventilation system  
Materials - Polyester, Nylon,  
Spandex, REISSA membrane and  
Reflective tech  
Sizes – S-4XL  
Colors – Black, Black/Fluo and  
Black/Ice*



Ref. SPJ196  
Preto/Ice  
Black/Ice





Ref. SPJ191  
Energy  
Preto  
Black



Ref. SPJ197  
Energy  
Preto/Fluo  
Black/Fluo





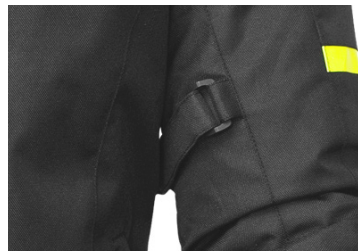
# Skin 2

100% Impermeável e respirável  
Proteções CE ombros, cotovelos e dorsal semirrígidas  
Forro interior térmico destacável  
Ajuste na cintura  
Bolso interior para telemóvel  
Ajuste nos braços  
Sistema de ventilação frontal  
Material – Poliéster e Reflective tech  
Tamanhos – S-4XL  
Cores – Preto, Preto/Cinza e Preto/Fluo

*100% Waterproof and Breathable  
Removable semi-rigid CE  
protections for shoulders, elbows  
and back  
Breathable lining membrane  
Waist adjustment  
Inside pocket for mobile phone  
Arms adjustment  
Front Ventilation system  
Material – Polyester and Reflective  
tech  
Sizes – S-4XL  
Colors – Black, Black/Grey and  
Black/Fluo*



**Ref. SPJ187**  
Preto/Fluo  
Black/Fluo





**Ref. SPJ180**  
**Skin 2**  
Preto  
Black



**Ref. SPJ188**  
**Skin 2**  
Preto/Cinza  
Black/Grey







**Ref. SPJ210**  
Preto  
Black



## Roma 2

100% Impermeável  
Proteções CE ombros, cotovelos e dorsal semirrígidas  
Forro interior térmico destacável  
Bolso interior  
Ajuste na cintura  
Ajuste nos braços  
Sistema de ventilação nos braços  
Cores – Preto  
Material – Poliéster, bombazine  
Tamanhos – S-4XL

*100% Waterproof  
Removable semi-rigid CE protections for shoulders, elbows and back  
Breathable lining membrane  
Interior pocket  
Waist adjustment  
Arms adjustment  
Arms Ventilation system  
Colors – Black  
Material – Polyester, corduroy  
Sizes – S-4XL*



# Freedom

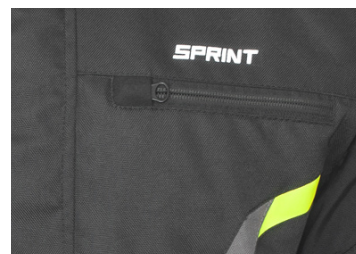
100% Impermeável e respirável  
Proteções CE ombros, cotovelos e dorsal semirrígidas  
Material refletor  
Material anti abrasivo nas mangas  
Forro interior térmico destacável  
Ajuste na cintura  
2 Bolsos exteriores  
2 Bolsos interiores + 2 no forro  
Ajuste nos braços  
Sistema de ventilação frontal e traseiro  
Materiais – Poliéster, Nylon, Spandex, membrana REISSA e Reflective tech  
Tamanhos – S-4XL  
Cores – Preto, Preto/Fluo

*100% Waterproof and breathable  
Removable semi-rigid CE  
protections for shoulders, elbows  
and back  
Reflective Material  
Anti Abrasive sleeves  
Breathable lining membrane  
Waist adjustment  
2 Exterior pockets  
2 Interior pockets + 2 in the lining  
Arms adjustments  
Front and back ventilation system  
Materials - Polyester, Nylon,  
Spandex, REISSA membrane and  
Reflective tech  
Sizes – S-4XL  
Colors – Black, Black/Fluo*



**Ref. SPJ217**  
Preto/Fluo  
Black/Fluo

**Ref. SPJ211**  
Preto  
Black







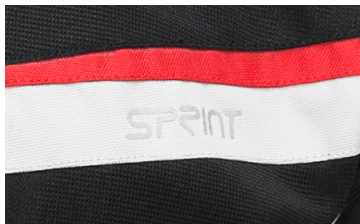






**Ref. SPJ101**  
Preto/Cinza  
Black/Grey

**Ref. SPJ106**  
Preto/Ice  
Black/Ice



## Free

Proteções CE ombros, cotovelos e dorsal semirrígidas removíveis

Material refletor

2 Bolsos exteriores

2 Bolsos interiores

Ajuste nos braços e cintura

Totalmente ventilado

Cores – Preto e Preto/Ice

Materiais – Poliéster, Mesh e

Reflective tech

Tamanhos – S-3XL

*Removable semi-rigid CE protections for shoulders, elbows and back*

*Reflective material*

*2 Exterior pockets*

*2 Interior pockets*

*Waist and arms adjustment*

*Ventilation system*

*Materials – Polyester, Mesh e*

*Reflective tech*

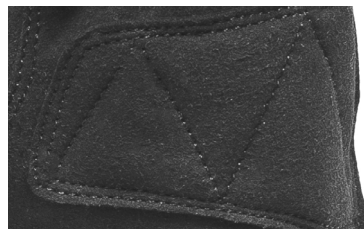
*Color – Black and black/ice*

*Sizes – S-3XL*

## WP09

100% Impermeável e respirável  
Palma da mão reforçada  
Proteções em pele  
Ajuste no pulso  
Materiais - Nylon, Poliéster e Nubuck  
Tamanhos – T8-T13  
Cor - Preto

*100% Waterproof and breathable  
Reinforced palm  
Leather protections  
Wrist adjustment  
Materials - Nylon, Polyester and Nubuck  
Sizes – T8-T13  
Color - Black*

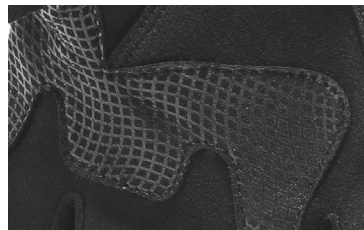
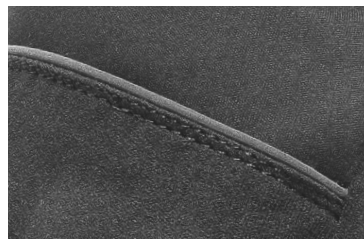


**Ref. SPG560**  
Preto  
Black

## WP10

100% Impermeável e respirável  
Palma da mão reforçada  
Proteção nós dos dedos  
Ajuste no pulso  
Materiais - Nylon, Poliéster e Nubuck  
Tamanhos – T8-T13  
Cor - Preto

*100% Waterproof and breathable  
Reinforced palm  
Knuckles protection  
Wrist adjustment  
Materials - Nylon, Polyester and Nubuck  
Sizes – T8-T13  
Color - Black*



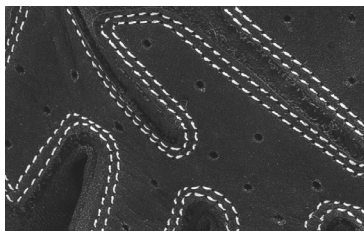
**Ref. SPG561**  
Preto  
Black











**Ref. SPG101**  
Preto  
Black



## SP04

Palma da mão reforçada  
Proteção nos nós dos dedos  
Ajuste no pulso  
Touchscreen  
Materiais – Poliéster, mesh, neoprene e nubuck  
Tamanhos – T8-T13  
Cor - Preto

*Reinforced palm  
Knuckles protection  
Wrist adjustment  
Touchscreen  
Materials - Polyester, mesh, neoprene and nubuck  
Sizes – T8-T13  
Color – Black*



**Ref. SPG111**  
Preto  
Black



## SP06

Proteção nós dos dedos  
Ajuste no pulso  
Material refletor  
Materiais – Poliéster e Lycra  
Tamanhos – T8-T13  
Cor - Preto

*Knuckles protection  
Wrist adjustment  
Reflective material  
Materials – Polyester and Lycra  
Sizes – T8-T13  
Color – Black*

# Lady Paris

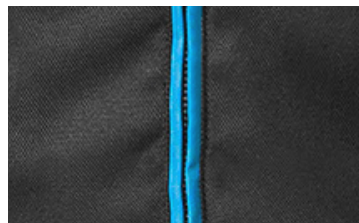
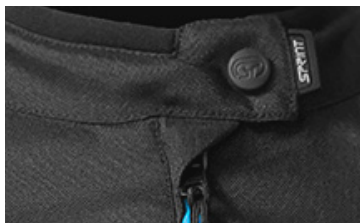
100% Impermeável e respirável  
Proteções CE ombros, cotovelos e  
dorsal semirrígidas  
Forro Interior térmico destacável  
Ajuste na cintura  
2 Bolsos exteriores  
2 Bolsos interiores + 2 no forro  
Materiais – Poliéster  
Tamanhos – L0-L6  
Cores – Preto/Azul e Preto/Roxo

*100% Waterproof and breathable  
Removable semi-rigid CE  
protections for shoulders, elbows  
and back  
Breathable lining removable  
Waist adjustment  
2 Exterior pockets  
2 Interior pockets + 2 in the lining  
Materials – Polyester  
Sizes – L0-L6  
Colors – Black/Blue and Black/  
Purple*



**Ref. SPJ153**  
Preto/Roxo  
Black/Purple

**Ref. SPJ152**  
Preto/Azul  
Black/Blue











# Lady Milano

100% Impermeável e respirável  
Proteções CE ombros, cotovelos e dorsal semirrígidas  
Forro Interior térmico destacável  
Entradas de ar frontais  
Duplo fecho frontal  
Ajuste na cintura  
Material refletor  
4 Bolsos exteriores  
2 Bolsos interiores + 2 no forro  
Materiais – Poliéster e neoprene  
Tamanhos – L0-L6  
Cores – Preto/Cinza e Preto/Marrom

*100% Waterproof and breathable  
Removable semi-rigid CE protections for shoulders, elbows and back*

*Breathable lining membrane*

*Front air system*

*Double front zipper*

*Waist adjustment*

*Reflector material*

*4 Exterior pockets*

*2 Interior pockets + 2 in the lining*

*Materials – Polyester and neoprene*

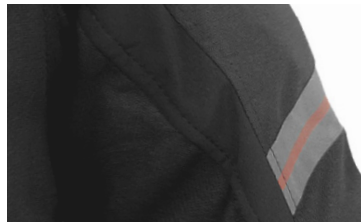
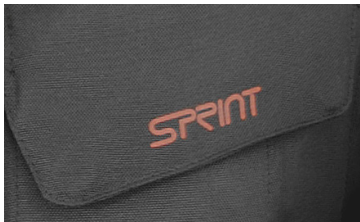
*Sizes – L0-L6*

*Colors – Black/Grey and Black/Maroon*



**Ref. SPJ238**  
Preto/Cinza  
Black/Grey

**Ref. SPJ233**  
Preto/Marrom  
Black/Maroon





# Lady WP05

100% Impermeável e respirável

Ajuste no pulso

Materiais - Nylon e Amara

Tamanhos – T5-T8

Cor - Preto

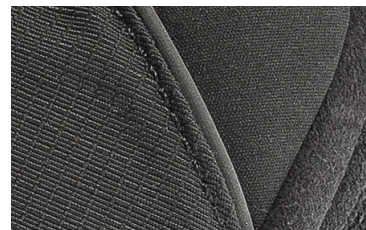
*100% Waterproof and breathable*

*Wrist adjustment*

*Materials - Nylon and Amara*

*Sizes – T5-T8*

*Color - Black*



**Ref. SPG530**

Preto

Black

# Lady WP 06

100% Impermeável e respirável

Ajuste no pulso

Proteção nós dos dedos

Materiais – Nylon, Mesh e Amara

Tamanhos – T5-T8

Cor - Preto

*100% Waterproof and breathable*

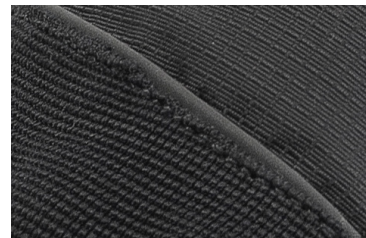
*Wrist adjustment*

*Knuckles protections*

*Materials - Nylon, Mesh and Amara*

*Sizes – T5-T8*

*Color - Black*



**Ref. SPG533**

Preto

Black



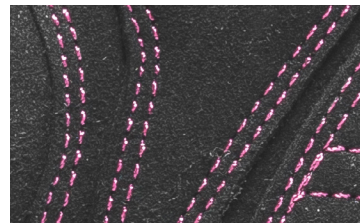
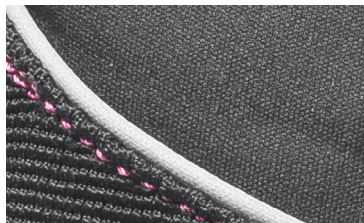








**Ref. SPG121**  
Preto/Rosa  
Black/Pink



## Lady SP03

Ajuste no pulso  
Proteção nós dos dedos  
Palma da mão reforçada  
Material Refletor  
Materiais - Mesh e Amara  
Tamanhos - T5-T8  
Cor - Preto/Rosa

*Wrist adjustment*  
*Knuckles protections*  
*Reinforced palm*  
*Reflector material*  
*Materials - Mesh and Amara*  
*Sizes - T5-T8*  
*Color - Black/Pink*



# First

100% Impermeável e respirável

Ajuste na cintura

Ajuste nos tornozelos

Forro interior destacável

2 bolsos exteriores

Material refletor

Material elástico

Reforço nos joelhos

Proteção CE joelhos e ancas removíveis

Materiais – 600D Poliéster

Tamanhos – S-3XL

Cores – Preto

*100% Waterproof and breathable*

*Removable CE protections for knees and hips*

*Removable inner lining*

*2 Exterior pockets*

*Elastic material*

*Waist adjustment*

*Ankle adjustment*

*Materials – 600D Polyester*

*Sizes – S-3XL*

*Colors – Black*



Ref. **SPP100**  
Preto  
Black

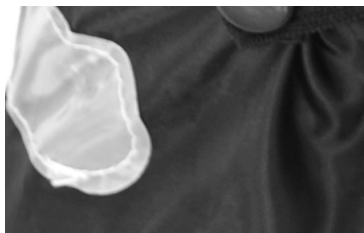
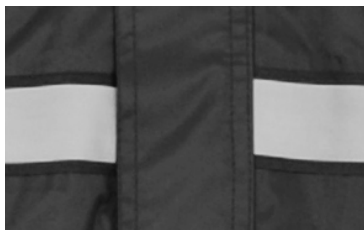












**Ref. SPW050**  
Preto  
Black

**Ref. SPW100**  
Preto  
Black

## Sobre bota

100% impermeável  
Sola completa TPR  
Material refletor  
Fecho com aba de proteção  
Ajuste elástico no tornozelo  
Materiais - Poliéster  
Cor - Preto  
Tamanhos - XS-L

*100% Waterproof  
Complete TPR sole  
Reflective material  
Full length zipper with flap  
Elastic ankle adjustment  
Materials - Polyester  
Color - Black  
Sizes - XS-L*

## Fato chuva

2 Peças 100% impermeável, inclui casaco e calças  
Fecho com aba de proteção  
2 Bolsos exteriores impermeáveis  
Banda refletora  
Materiais - Pongee, Poliéster e PVC  
Cor - Preto  
Tamanhos S-XL

*2 pieces 100% waterproof rain suit, includes jacket and pants  
Full length zipper with flap  
2 waterproof outer pockets  
Reflective striping  
Materials - Pongee, Polyester and PVC  
Colors - Black  
Sizes - S-XL*

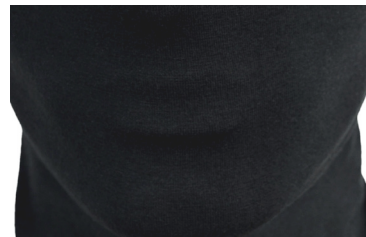
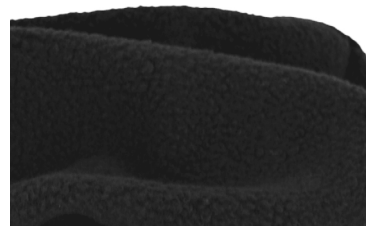
# Tube Polar

Ajuste por elástico  
Suave  
Materiais – Poliéster e polar  
Tamanho universal  
Cor - Preto

*Elastic adjustment*  
*Soft*  
*Materials – Polyester and polar*  
*One size*  
*Color - Black*



**Ref. SPW002**  
Preto  
Black



# Passa Montanhas

Costuras planas  
Suave  
Uma abertura frontal  
Materiais – Algodão e Spandex  
Tamanho universal  
Cor - Preto

*Flat seams*  
*Soft*  
*One frontal hole*  
*Materials – Cotton and Spandex*  
*One size*  
*Color - Black*



**Ref. SPW001**  
Preto  
Black







***WWW.SPRINTMOTO.PT***

**info@sprintmoto.pt**



**Siga-nos no facebook**

**Salgados Moto Lda.**  
Rua de S. Francisco nº 470-A  
Armazém C-Adroana  
2645-019 Alcabideche  
Telf. 214 691 484